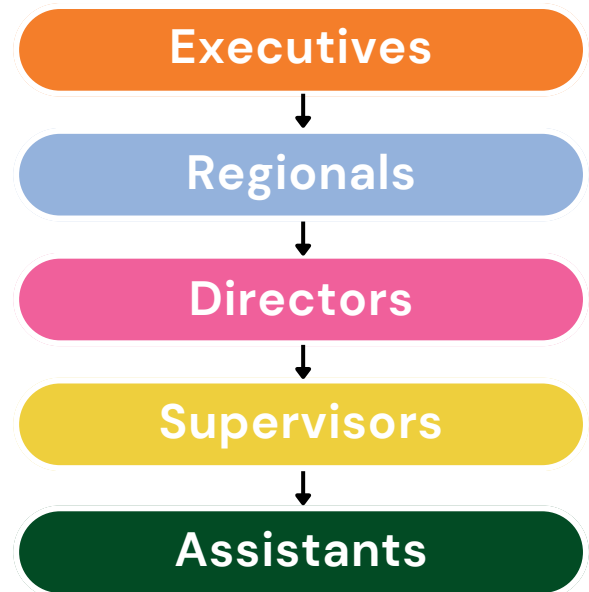


A CLEAR CHAIN OF COMMAND SUPPORTS SAFE SUPERVISION

ADMINISTRATIVE TEAM PROTOCOLS

Effective supervision thrives on clarity and connection. By establishing a clear chain of command, we ensure every team member feels supported and knows exactly where to turn for guidance. This structure removes guesswork, ensuring every child is always under the watchful care of a dedicated staff member.

When we understand our roles, we create a seamless safety net. Whether managing breaks or transitions, these protocols allow us to work with confidence, knowing a leader is always present to support the team. Together, we ensure responsibility is never left to chance.



- **A designated person in charge is always identified and present (Director or assigned designee).**
- **Each group of children has a clearly assigned staff member responsible for supervision.**
- **Staff understand roles and reporting structure (who they report to, who makes decisions).**
- **There is a plan for coverage during breaks, transitions and staff absences.**
- **Staff communicate and escalate concerns immediately to the appropriate leader.**
- **Responsibility for supervision is never unclear or assumed.**